

# Race equality strategy

Goal: To achieve race equality through cultural change

Cultural change will depend on the three foundations and five workstreams outlined in the diagram.



## Leadership and strategy

The clear stance that 'structural racism exists at ARU' with a long-term commitment to advance race equality.



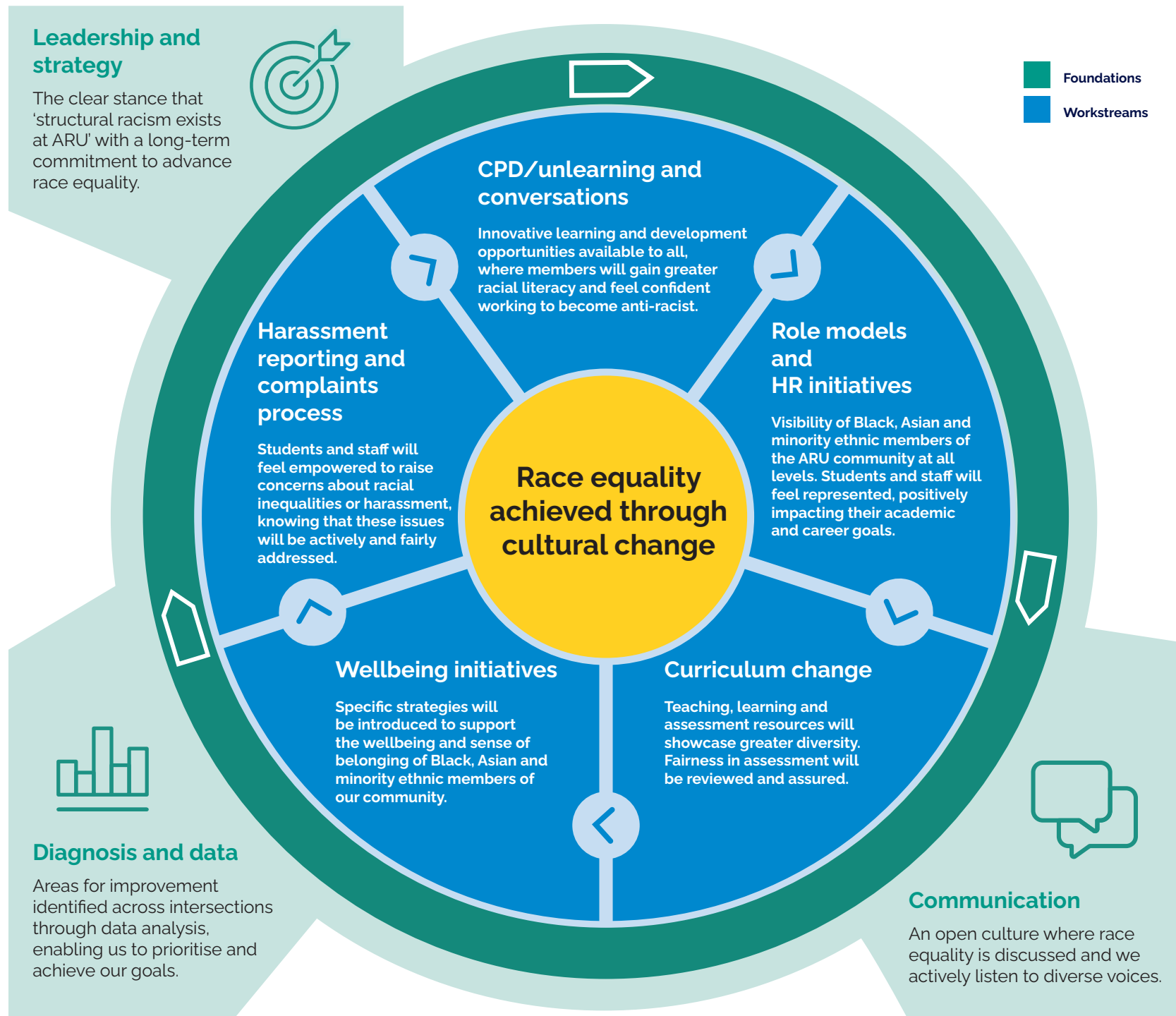
## Diagnosis and data

Areas for improvement identified across intersections through data analysis, enabling us to prioritise and achieve our goals.



## Communication

An open culture where race equality is discussed and we actively listen to diverse voices.



Foundations  
Workstreams